
PS520 PALLET LOAD STACKER



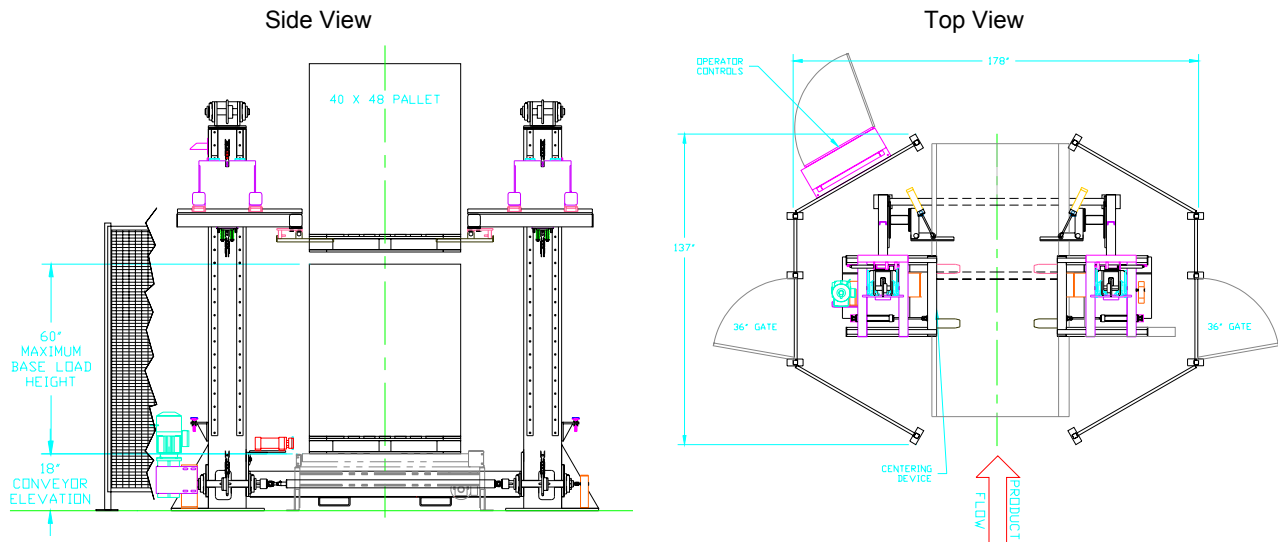
General Description

The PS520 Pallet Load Stacker is designed to stack pallet loads quickly and accurately. The PS520 can save up to 60 seconds per stacked load versus forklift stacking, saving both labor and time while using a minimum amount of floor space.

The PS520 mounts on both sides of the pallet conveyor and holds the stretch wrapped loads with a positive stop gate. A pneumatic alignment system locates the pallets in a consistent position. The Pallet Load Stacker uses pneumatic slide arms to grab the pallet and lift it with an electric motor. The machine is controlled by a PLC, which can communicate with the conveyor, stretch wrapper, and palletizer, making it part of the packaging line. By tracking pallets via a data stream provided from the palletizer, non-matching or partial pallets are allowed to pass through.

Utilizing a heavy-duty, two-post steel frame designed for maximum stability and quick installation, the PS520 Pallet Load Stacker is ideal for today's high volume warehousing operations.

PS520 PALLET LOAD STACKER



Specifications

| | |
|-----------------------------------|---|
| Size (L x W x H) | 137" x 178" x 130" (3.5 m x 4.5 m x 3.3 m) |
| Electrical | 480 VAC, 60 Hz, 3 phase, 10 A 110 VAC, 60 Hz, 15 A 24 VDC Control Panel |
| Pneumatics | 3 CFM (85 Lpm) @ 60 PSI (414 kPa) Clean Dry Air |
| Pallet Size | 40" x 48" CHEP or GMA pallet loads traveling broad side first |
| Maximum Base Pallet Load Height | 58" on 30" conveyor 70" on 18" conveyor |
| Maximum Lifted Pallet Load Weight | 1200 lbs. |
| Double-Stack Cycle Time | 44 sec. |

Options

| |
|---|
| Heavy-duty upgrade for increased maximum pallet load weight |
| Human-readable HMI status display (WonderWare, Vorne, RSView, PanelMate, PanelView, more) |
| Customer-specified control system (Allen-Bradley PLC/SLC/CLX, Flex I/O, Modicon, more) |
| Increased maximum base pallet load height |
| Adaptation for a wide range of pallet load sizes |
| Multi-stack (3+) capability |
| "Top Layer Full" detector: avoids stacking on top of a partial load |
| Maintenance access gate safety switches |
| Turnkey installation |

Kolinahr Systems, Inc.

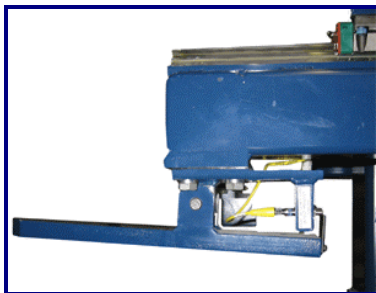
6840 Ashfield Drive
Cincinnati, OH 45242

E-Mail: sales@kolinahr.cc
Phone: 513-745-9401
Fax: 513-794-3240
On the Web: <http://www.kolinahr.cc>

PS520 PALLET LOAD STACKER

| Standard Features | Benefits |
|--|--|
| Compact Size | Easy to install Uses minimal amount of floor space |
| Variable Speed Electrical Lift Mechanism | Provides low impact start and stops Improves accuracy of lift placement for setting the load down No hydraulics: Low maintenance and environmentally friendly |
| Load Alignment System | Provides extremely accurate stacking of pallets |
| “Load On Foot” Sensor | Ensures that the lifting carriage will not retract until the load is down |
| Open Design | The open top allows for higher multiple stacks and easier installation |
| Heavy-Duty Stand & Mounting | The large posts (12” L x 8” W x 3/8” THK) and mounting provides maximum stability for pallet load lifting |
| PLC Fault Messages | Easy display and identification of problems |
| 24 VDC Control Panel | Safer than 120 VAC control panels |
| Short Pick-Up Travel | Stacks faster than standard forklift style pick-up Reduced chance of pallet misalignment |
| Linear Rails for Carriage Travel | Lifting carriages ride on heavy duty linear bearings providing years of dependable, precise, quiet operation |
| “Top of Load” Sensor | Minimizes the lifting motion – faster throughput Accurately measures pallet load height |
| Industrial Safety Features | Wire mesh safety enclosure LEXAN® safety guard around 480 VAC in control panel NEMA 12 controls enclosure Lockable electrical disconnect and air dump valve |
| Chain Safety Spring | A spring loaded chain take-up on the lifting chain for each tower provides a soft connection to lessen drive impacts during jam conditions |
| Carriage Over-travel Stops | Both upper and lower stops provide mechanical over-travel protection |
| Fault Beacon | Alerts operator that the machine is down |

“Load On Foot” Sensor



Load Alignment System



Positive Stop Gate

